



# CathexisVision Gallagher Command Centre Plugin Configuration Guide

## Contents

1	Introduction .....	3
1.1	Requirements.....	3
2	Install and Configure Software.....	4
2.1	CathexisVision .....	4
2.2	Cathexis Plugin .....	4
3	Gallagher Command Centre Software .....	5
3.1	Install.....	5
3.2	Configure Users.....	5
3.3	Add a DVR System.....	5
3.4	Add DVR Cameras .....	7
3.5	Set the DVR Camera to Stream.....	9
3.6	Stream the Camera .....	10
4	Conclusion.....	11

# 1 Introduction

A CathexisVision plugin has been developed for use within the Gallagher Command Centre Software which will allow CathexisVision cameras to be streamed (live and review) from within the Gallagher GUI. This document will detail the steps to configure and operate the integration.<sup>1</sup>

## 1.1 Requirements

This integration works by licensing the CathexisVision NVR with a Gallagher plugin license, and installing the Gallagher Plugin application on the same unit that is running the Gallagher Command Centre Software.

### 1.1.1 Cathexis Requirements

- CathexisVision 2018.4 and later.
- Gallagher Plugin License (CGPL-2000) applied to the CathexisVision NVR.
- Gallagher Plugin application ver. 1.

Note: Without the above plugin license, a notification will be shown in the Gallagher Command Centre indicating an unlicensed NVR.

### 1.1.2 Gallagher Requirements<sup>2</sup>

- Gallagher Command Centre ver. 7.90.0915.

---

<sup>1</sup> While Cathexis has made every effort to ensure the accuracy of this document, there is no guarantee of accuracy, neither explicit, nor implied. Specifications are subject to change without notice.

<sup>2</sup> Cathexis makes a best attempt to ensure that the equipment and license requirements of the 3rd party equipment are adequately specified. However, it is possible that the requirements of the 3rd party equipment may change over time, including the interface hardware/firmware and licensing. The reader is urged to clarify the latest requirements directly with the 3rd party equipment supplier.

## 2 Install and Configure Software

### 2.1 CathexisVision

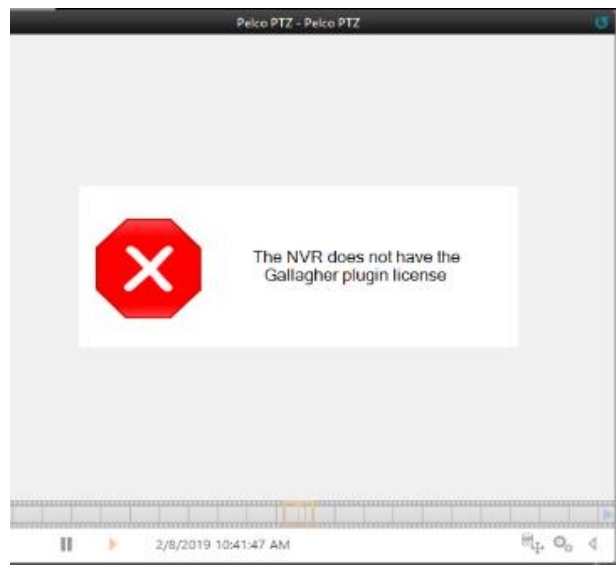
#### 2.1.1 Install

If not already installed, follow the CathexisVision installation instructions that can be found in the relevant versions of the CathexisVision Setup Manual or the CathexisVision Quick Start Guide.

#### 2.1.2 Configure

Ensure that the Gallagher Plugin license (CGPL-2000) is applied to the CathexisVision NVR.

Without this license, the Gallagher Command Centre will show a notification indicating an unlicensed NVR.



### 2.2 Cathexis Plugin

Download and install the Cathexis Plugin (ver. 1) on the unit that is running the Gallagher Command Centre Software.

The plugin can be downloaded on the Cathexis website:

<https://integrations.cathexisvideo.com/integration/gallagher-plugin/>

Once downloaded, run the setup file and follow the installation wizard.

## 3 Gallagher Command Centre Software

### 3.1 Install

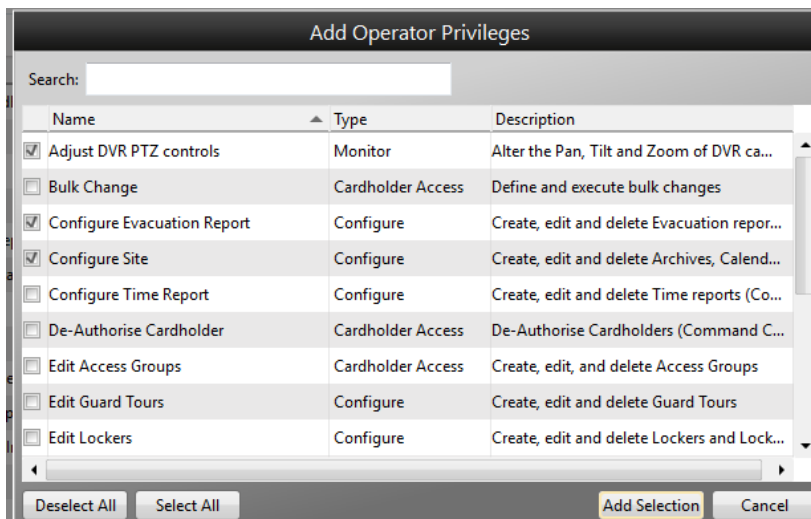
Install the Gallagher Command Centre Software.

**Note:** This is a basic guide to configuring the Gallagher Command Centre for connection with CathesisVision. For more details on the configuration and functionality of the Gallagher product, please consult the software manufacturer for more details and instruction.

### 3.2 Configure Users

In order to configure a connection between CathesisVision and the Gallagher Command Centre software, users with relevant permissions must be configured in Gallagher Command Centre.

1. Open Gallagher Command Centre software and navigate to Administration → Operator Groups and select the Privileges tab in the window that opens.
2. Click **Assign Privileges** button to modify privileges for the desired operator.



Select all desired privileges.

**Note:** At least one operator must have the ability to add DVR systems and DVR cameras, as this is required to configure connection with CathesisVision (below).

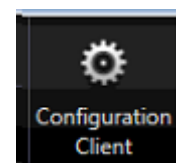
### 3.3 Add a DVR System

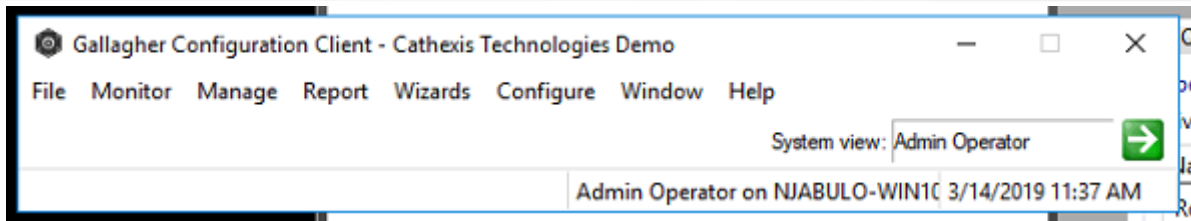
Once the Gallagher Command Centre and the Cathesis Plugin applications are installed, the Gallagher Command Centre must be configured to connect to the CathesisVision server by adding a DVR system to the Gallagher Command Centre.

**Note:** Ensure that the operator performing this configuration has been given permission within the Gallagher Command Centre to add DVR systems.

#### 3.3.1 Configuration Client

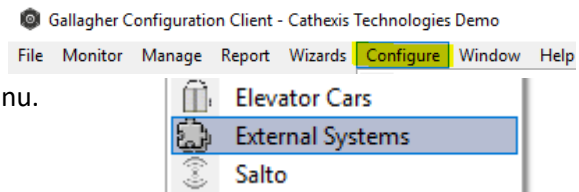
In Command Centre, select Configuration Client on the right-hand side of the window.





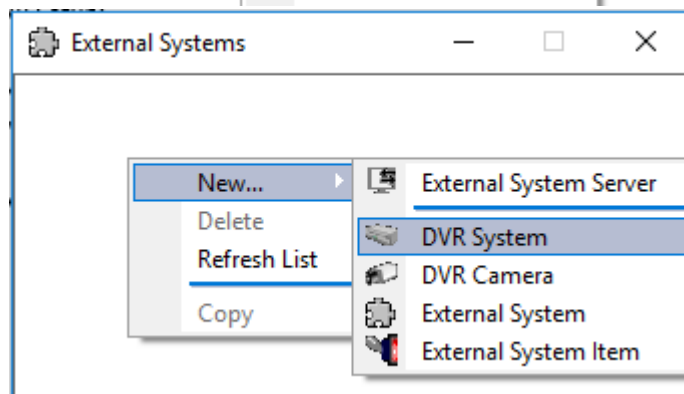
In the client that opens, select the Configure menu.

Select External Systems from the drop-down menu.



In the External Systems window, **right-click anywhere** → **New** → **DVR System**.

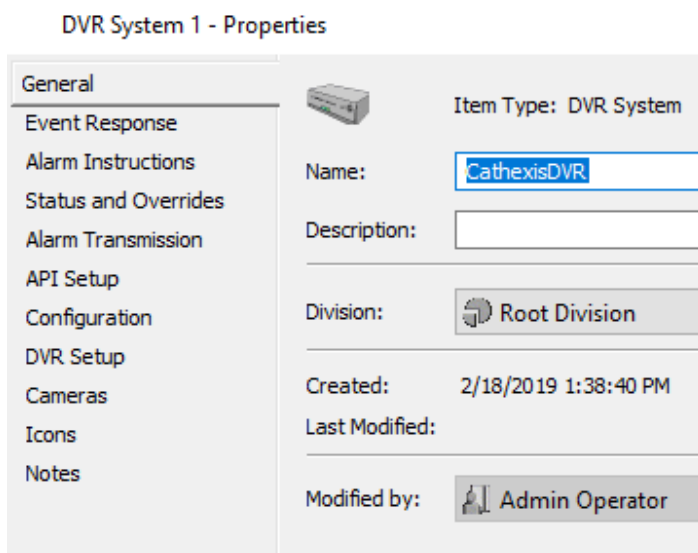
**Note:** Ensure that the operator has been given permissions to add DVRs within the Gallagher Command Centre or this option will be greyed out.



### 3.3.2 DVR Setup

In the window that opens, enter the details for the CathexisVision server from which Gallagher Command Centre will receive streamed video.

#### 3.3.2.1 General Tab



In the General tab, give the DVR a name and description.

### 3.3.2.2 DVR Setup Tab

Add the details of the CathexisVision DVR system.

- Enter the IP address and login credentials for the CathexisVision Site Master NVR.
- Under Viewing Windows, ensure CathexisVision is selected for both **Stored** and **Live**.

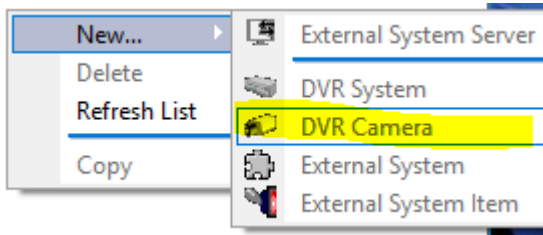
Click **Apply** to save these settings.

## 3.4 Add DVR Cameras

Once the connection between the Gallagher Command Centre and the CathexisVision NVR has been configured, details for the camera running in CathexisVision must be entered in order to allow streaming in the Gallagher Command Centre software.

### 3.4.1 Add a DVR Camera

Open the Gallagher Configuration Client and once again navigate to External Systems (see 3.3.1).



In External Systems, right-click anywhere and select **New → DVR Camera**.

### 3.4.2 DVR Camera Setup

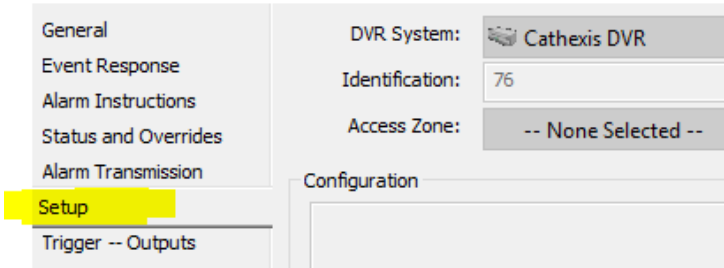
In the window that opens, enter the details for the camera running in CathexisVision.

#### 3.4.2.1 General Tab

Give the camera a name and description for reference within the Gallagher Command Centre software.

### 3.4.2.2 Setup Tab

Pelco PTZ - Properties



In the Setup tab, select the CathexisVision DVR system that was added in 3.3.

Then enter the internal camera ID for the camera running on the CathexisVision software. See below for locating this ID.

#### 3.4.2.2.1 CathexisVision Camera ID

The list of cameras running on the CathexisVision server can be pulled through from any web browser. **Note:** It is recommended that Chrome is used, and the JSONview extension is installed in order to render the text readable.



In the browser, enter the following into the address bar:

[http://nvr\\_ip\\_address:33104/cameras](http://nvr_ip_address:33104/cameras)

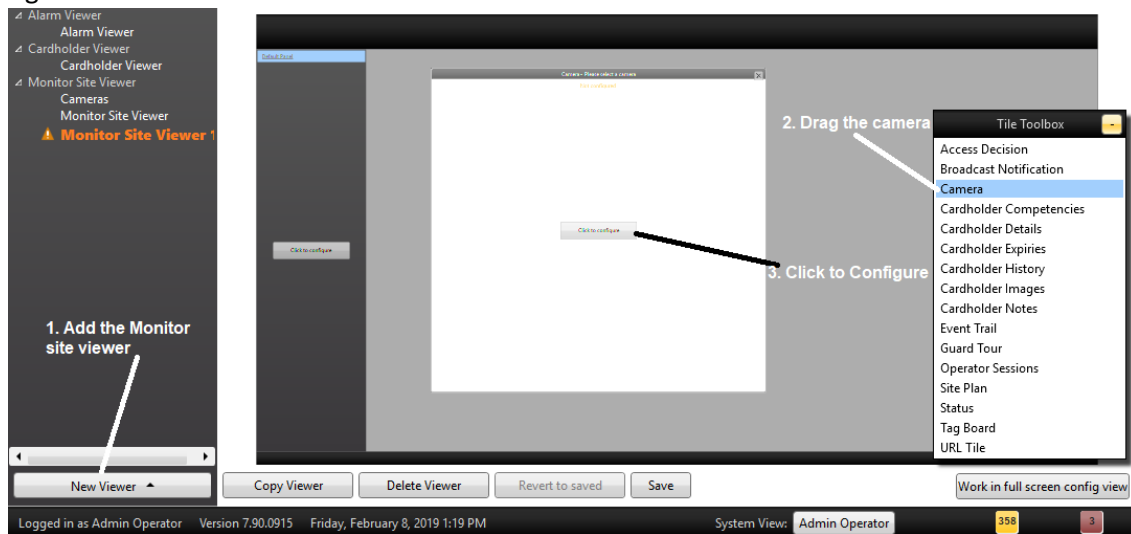
Where nvr\_ip\_address is the IP address of the CathexisVision server.

Take note of the ID of the relevant camera and enter it into Gallagher Command Centre software (see 3.4.2.2.).



## 3.5 Set the DVR Camera to Stream

Open the Gallagher Command Centre Software and navigate to Viewer Configuration at the top right-hand side of the screen.



### 3.5.1.1 Adding a Viewer

If it hasn't been already configured, a Viewer may be added by clicking New Viewer at the bottom left of the screen.

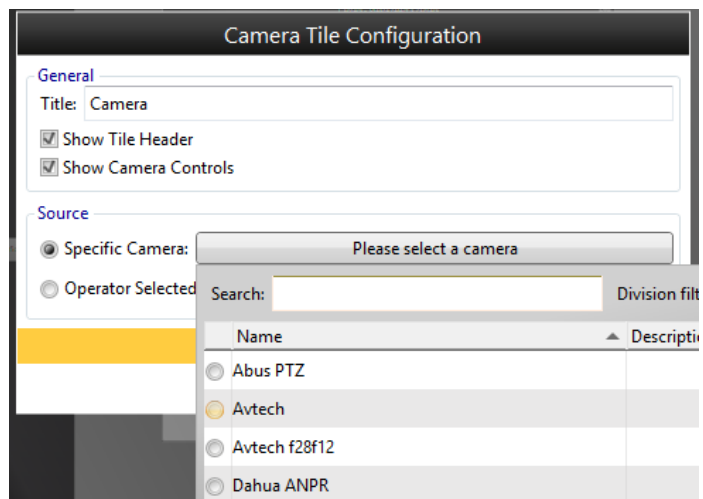
### 3.5.1.2 Add a Camera

From the Title Toolbox, click Camera and drag it to the centre panel.

### 3.5.1.3 Configure Camera

Once the camera has been dragged onto the panel, the camera type must be selected. To do this, click **Configure**.

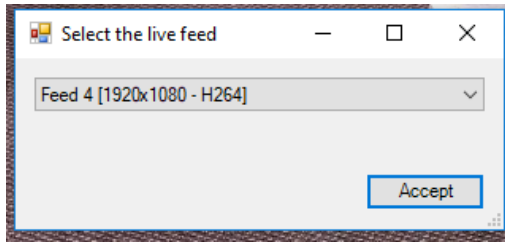
1. Give the camera descriptive name.
2. Select whether to show/hide title headers and camera controls.
3. Select the camera source:
  - **Specific camera:** Select a specific camera from a list.
  - **Operator selected:** Allow operators to select the camera when viewing the camera.
4. The user may also arrange the cameras as desired at this point.



5. Once done configuring the cameras, save the settings and restart the software.

## 3.6 Stream the Camera

Open Gallagher Command Centre and navigate to **Cameras** where all added cameras will be displayed. Multiple cameras may also be streamed simultaneously.



If the selected camera has multiple streams, a popup will prompt the user to select the desired stream.

### 3.6.1 Operator Selected Camera

If the option for the operator to select the camera was chosen during setup (see par. 3.2.3), use the **Find Camera** button to return all configured cameras and select the desired camera for streaming.

To remove the selected camera, click **Clear**.

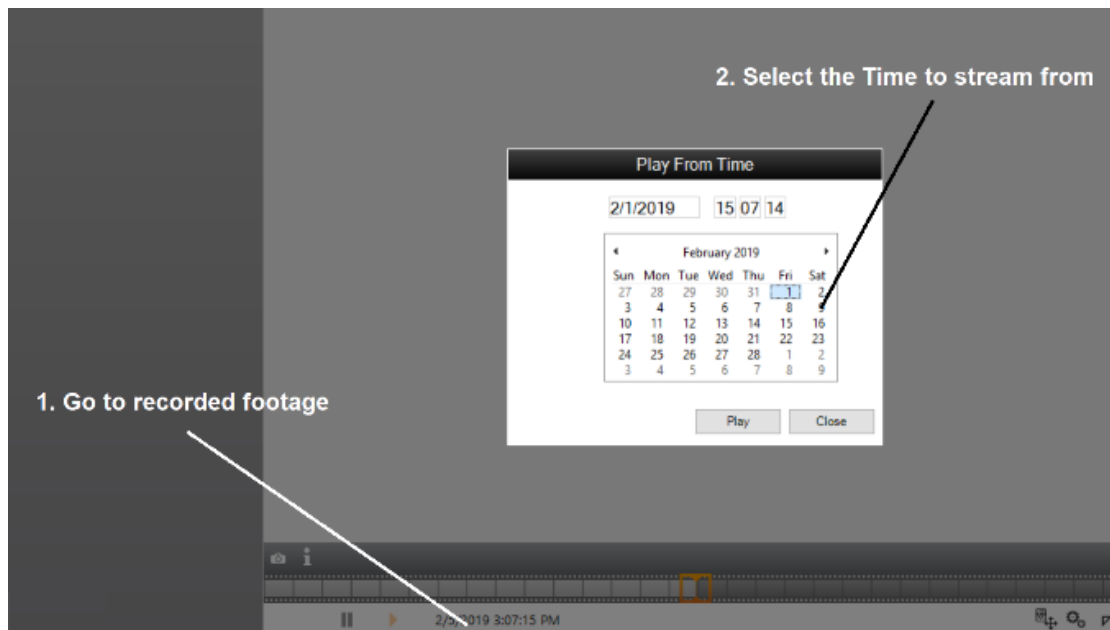
### 3.6.2 Camera Controls

#### 3.6.2.1 PTZ

Once the camera is streaming, PTZ controls and presets can be displayed by hovering the mouse over the stream.

#### 3.6.2.2 Review Recorded Footage

To review recorded footage, click the recorded footage (if there is recorded footage it will be located under the trackbar) and select the review time in the popup window. If the selected time is not available for review, the software will stream footage which is as close as possible in time to the requested footage.



## 4 Conclusion

Please remember that this appnote was created specifically to deal with this integration. For more information, please consult the Cathexis website ([cathexisvideo.com](http://cathexisvideo.com)), contact [support@cat.co.za](mailto:support@cat.co.za), or consult the relevant product manufacturer.